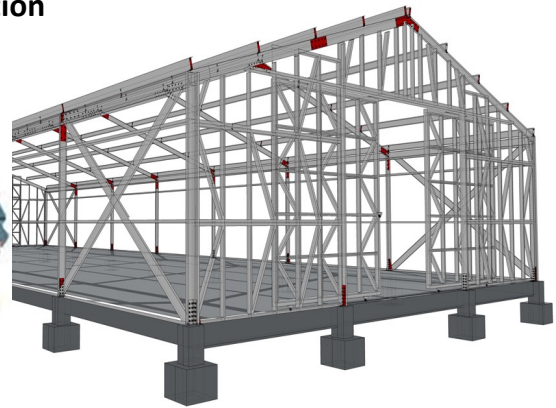


## Light Weight Steel Frame Construction



[www.steelframewarehouse](http://www.steelframewarehouse)

0726472533

[andre@steelframewarehouse.co.za](mailto:andre@steelframewarehouse.co.za)

## A Complete Package

- Building Concept | Feasibility | Weight Load Savings | Time Savings
- Building Architectural Design
- Green Building Attributes
- Energy Performance Certification
- Green Building Assessments
- Engineering Civils
- Engineering Structural
- Fire | Acoustics | Thermal Building Performances
- Plan Submission To Local Building Council
- Estimations and Contracts
- Building Contractor Contracts
- Manufacturing Process In Controlled Factory Facility
- Pre Fabricated | Modular Building Systems
- Turn Key Building Contract
- White Box Building Contract
- All Services Carried out By Registered Certified Professionals
- Excess of 17 Years Of Experiences
- Project Information Available on Request