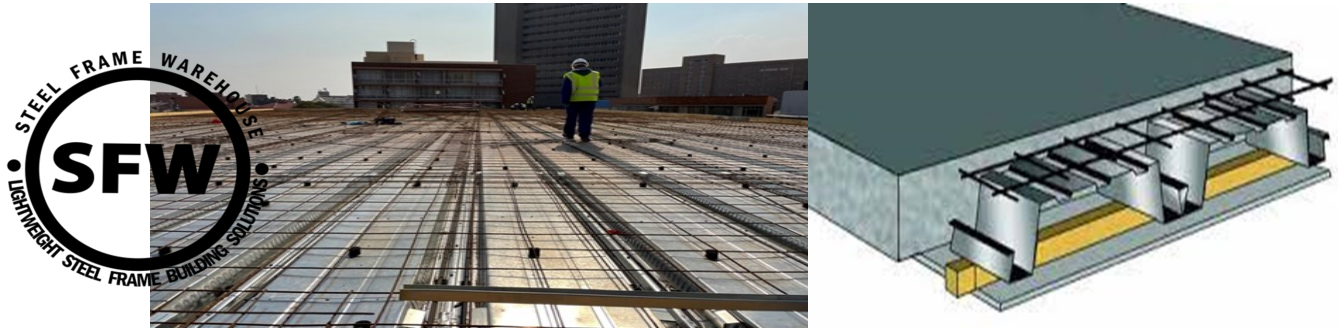


Light Weight Steel Frame | Void Coffe and Trough Systems



[www.steelframewarehouse](http://www.steelframewarehouse.com)
0726472533
andre@steelframewarehouse.co.za

Suspended Floors Light Weight Steel Frame Construction

- Light Weight Permanent Shutter Suspended Floor Systems
- Savings On Concrete Pour Materials Depending on Profile 52% Savings
- Savings On Weight Loadings
- Savings Of Columns | Diameter Of Columns
- Savings On Propping Positioning `
- Reduction Of Vibrator Time
- Speed Of Concrete Pour and Disbursement Of Materials | User Friendly
- Time Savings
- Span Table Available | Feasibility | Loadings Calculated
- Pre Engineer and Engineer Attendance on Pour | Sign Off
- Detailed Drawings | Renders | Revit Model
- Fire Ratings and Performances Considerations
- Complete Structural Design Using Light Weight Steel Frame Systems
- Top Structure Assessment | Building on Top of Existing Structures
- Increase The Yield of The Building Foot Print—Build UP